

Application area

- Machinery construction
- Chemical and petrochemical industry
- General process technology

Technical data

Constructional design / case

Basic body:	Volume reduced diaphragm base Material: stainless steel mat.-no. 1.4404/1.4435 (316L)
Diaphragm:	Inline diaphragm
Material wetted parts:	Diaphragm: See order details Basic body: Stainless steel mat.-no. 1.4404/1.4435 (316L)

Process connection

Design:	Flange connection per EN 1092-1 and ASME B16.5 Further designs upon request.
Nominal pressure/Nominal width:	See table

The sealing is not included in the scope of delivery.

Features

- Circular diaphragm of stainless steel, slightly grooved, laser welded
- Volume optimised diaphragm base
- Self-draining
- System fillings for different applications
- Connection to zone 0
- Measuring device connection:
 - directly welded
 - directly screwed
 - with temperature decoupler
 - with capillary

Options

- Certificates
 - Material certificate acc. to EN 10204-3.1
- Special materials upon request

Application

Suitable for mounting to bourdon tube pressure gauges and pressure transmitters. The inline diaphragm seal with flange connection in cell design is suited for measuring aggressive, highly viscous media and for high process temperatures.

Sealing surfaces

per:

- EN 1092-1, model B1, B2, D, E
- ASME B 16.5, RFSF

With special material surface upon request.

Measuring device connection

See order details.

Material stainless steel mat.-no. 1.4301 (304)

System filling

See order details; further fillings upon request.

Further details about pressure transmission fluids see general technical information TA_038.

Temperature error

In order to optimise the system we provide a detailed error calculation upon request .

Approvals/Certificates

Connection to Zone 0: with flame arrester,
 IIG IIC according to PTB 03 ATEX 4032 X

Weight

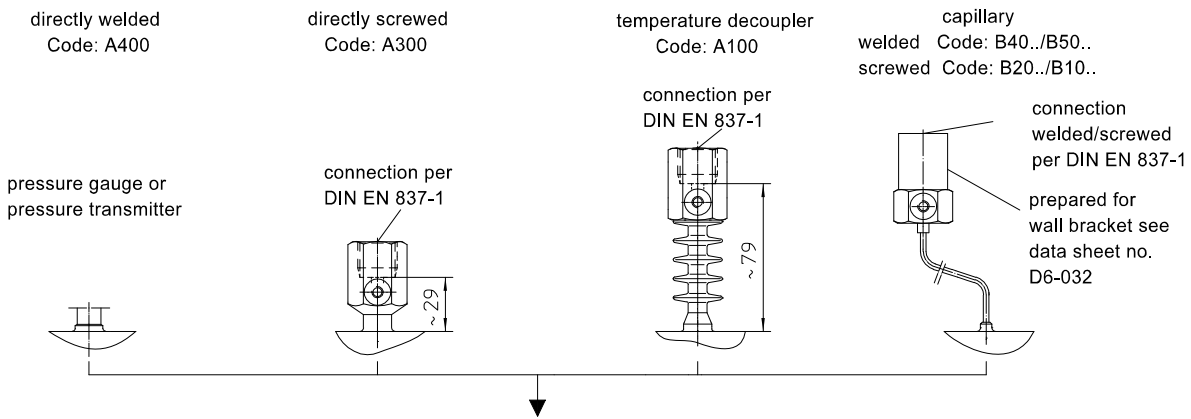
With measuring device connection G1/2:
 EN connection/ASME connection

DN 25	DN 1"	approx. 3,2 kg
DN 40	DN 1 1/2"	approx. 4.8 kg
DN 50	DN 2"	approx. 6.0 kg

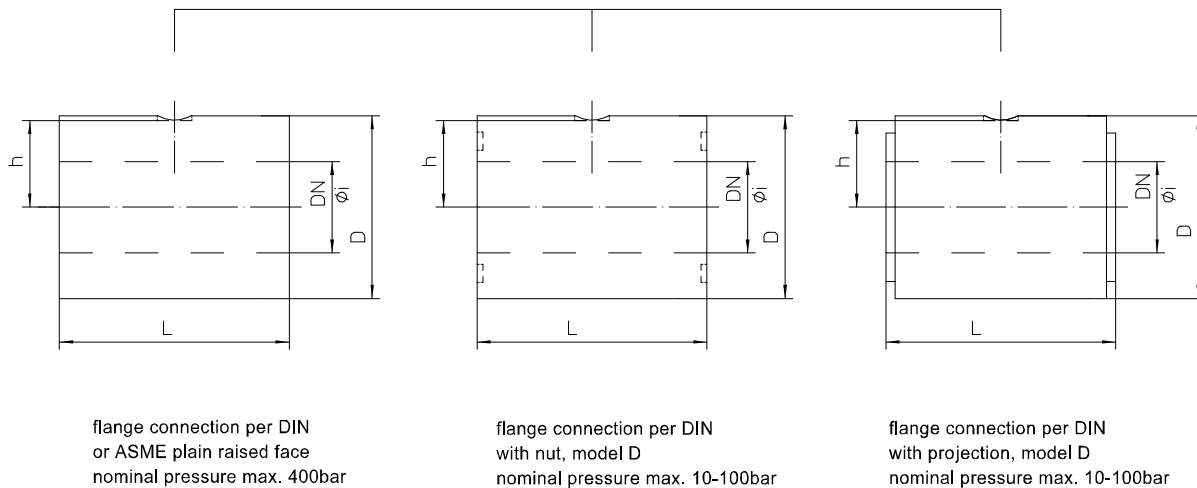
DN 65	DN 2 1/2"	approx. 7.6 kg
DN 80	DN 3"	approx. 5.9 kg
DN 100	DN 4"	approx. 7.2 kg
DN 125	DN 5"	approx. 8.3 kg
DN 150	DN 6"	approx. 10.2 kg

Further information about diaphragm seals see general technical information TA_031.

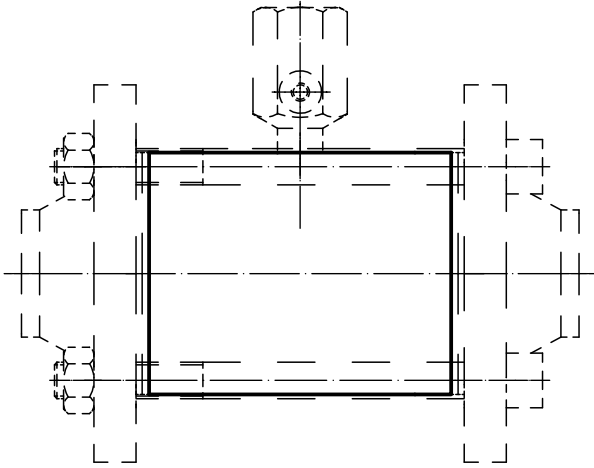
Measuring device connection



Dimensions



Mounting example



Dimensions (mm)			EN 1092-1		
DN	Ø i	D	L standard	L* optional	h
25	28.5	68	100	60	32.0
40	43.1	88	100	60	42.0
50	54.5	100	100	60	48.0
65	70.3	120	100	60	58.0
80	82.5	138	60	100	67.0
100	107.1	160	60	100	78.0
125	127.0	188	60	100	92.0
150	153.9	216	60	100	106.0

Dimensions (mm)			ASME B 16.5		
DN	Ø i	D	L standard	L* optional	h
1"	28.5	50	100	60	23
1 1/2"	43.1	73.2	100	60	34.6
2"	54.5	91.9	100	60	44.0
2 1/2"	70.3	104.6	100	60	50.3
3"	82.5	127.0	60	100	61.5
4"	107.1	157.2	60	100	76.6
5"	127.0	188.0	60	100	92.0
6"	153.9	216.0	60	100	106.0

* L = 120 mm available, special lengths upon request

Order details

Inline diaphragm seal for general applications, flange connection cell design, Type series DP

Order details inline diaphragm seal DP. . . .			
DP21 . .	nominal width	flange per EN 1092-1	DN 25
DP23 . .			DN 40
DP24 . .			DN 50
DP25 . .			DN 65
DP26 . .			DN 80
DP27 . .			DN 100
DP28 . .			DN 125
DP29 . .			DN 150
			further nominal widths upon request
DP61 . .			nominal width
DP62 . .	DN 1 1/2"		
DP63 . .	DN 2"		
DP64 . .	DN 2 1/2"		
DP65 . .	DN 3"		
DP66 . .	DN 4"		
DP67 . .	DN 5"		
DP68 . .	DN 6"		
	further nominal widths upon request		
	sealing surface ¹	EN 1092-1	
8		model B2	RFSF, 6000 lbs
6		model D	Large Groove 2500 lbs
7		model E	Large Male 2500 lbs
4		model B1	RF 125...250 AA
0	design	standard	
2		zone 0	

A400 .	measuring device connection	directly	welded
A300 .			screwed G1/2
A100 .		with temperature decoupler	screwed G1/2
B40 . .		with capillary	welded
B20 . .			screwed G1/2
B50 . .		with capillary and stainless steel protective tube	welded
B10 . .			screwed G1/2
11		capillary length	1 m
12			1.6 m
13			2.5 m
14			4 m
21			5 m
15			6 m
23			7 m
16	8 m		
17	10 m		
9	others		
7	material wetted parts	stainless steel mat.-no. 1.4435 (316L), sealing surface stainless steel mat.-no. 1.4404 (316L)	
3		Hastelloy C 276	
8		Hastelloy C 4	
9		as in writing	
F1	insertion length L	60 mm, standard at \geq DN 80 (3")	
F2		100 mm, standard at \leq DN 65 (2 1/2")	
F3		120 mm	
F9		as in writing	
	system filling ²	<u>pressure transmission fluid</u>	<u>temperature range</u> ³
L22		synthetic oil, free of silicone FD1, standard	-10...140 °C
L23		synthetic oil, free of silicone FD1, pls. specify max. temperature	-50...230 °C
L31		high temperature oil FV3H	-10...400 °C

Additional features (to be indicated in case of need, only)	
--	--

W1020	material certificate per EN 10204-3.1, wetted parts
-------	---

Order code (example): DP2580 - A4007 - F2 - L22 - ...

¹ with plain sealing surface, roughness according to DIN 4768 : R_z = 1,5

² for more detailed information about pressure transmission fluids see TA_038.
Please state temperature range to allow an accurate calculation of the system.

³ max. media temperature for pressures > 0 bar rel.